



»» Implementing Canada's Plan for Used Nuclear Fuel

Mike Borrelli, Section Manager, Site
Selection

John Kielty, Senior Advisor, Municipal
Relations

nwmo

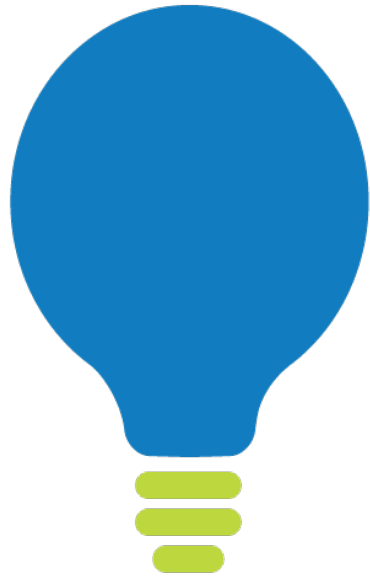
NUCLEAR WASTE
MANAGEMENT
ORGANIZATION

SOCIÉTÉ DE GESTION
DES DÉCHETS
NUCLÉAIRES

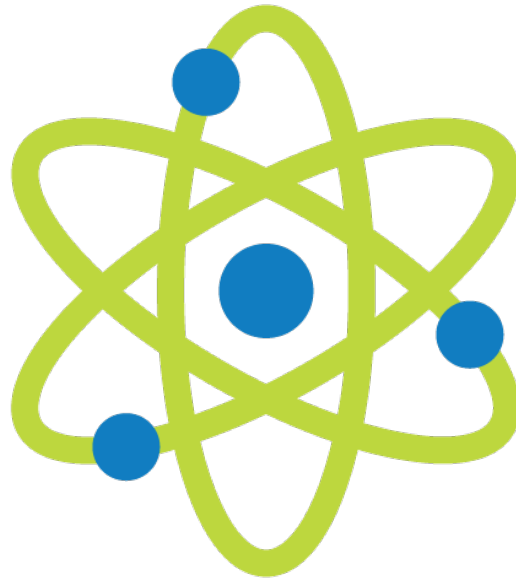


» Progress on Canada's Plan

Implementing a safe, long-term plan



Created in 2002



Non-profit organization
funded by waste owners



Through dialogue with
Canadians and Indigenous
peoples, Canada's plan emerged

SASKATCHEWAN

- 1
- 2
- 3

ONTARIO

- 4
- 5
- 6
- 7
- 8
- 9
- 10
- 11
- 12
- 13
- 14
- 15
- 16
- 17
- 18
- 19
- 20
- 21
- 22

Communities that expressed interest in the site selection process

● **Assessments underway in the area**

- 5. Ignace
- 21. South Bruce

● **Communities not identified for further study**

- 1. English River First Nation
- 2. Pinehouse
- 3. Creighton
- 4. Ear Falls
- 6. Red Rock
- 7. Nipigon
- 8. Schreiber
- 9. Manitouwadge
- 10. Hornepayne
- 11. White River
- 12. Wawa
- 13. Blind River
- 14. Elliot Lake
- 15. The North Shore
- 16. Spanish
- 17. Saugeen Shores
- 18. Arran-Elderslie
- 19. Huron-Kinloss
- 20. Brockton
- 22. Central Huron

Site Selection Criteria

To identify a preferred location to take into detailed site characterization



Safety

1



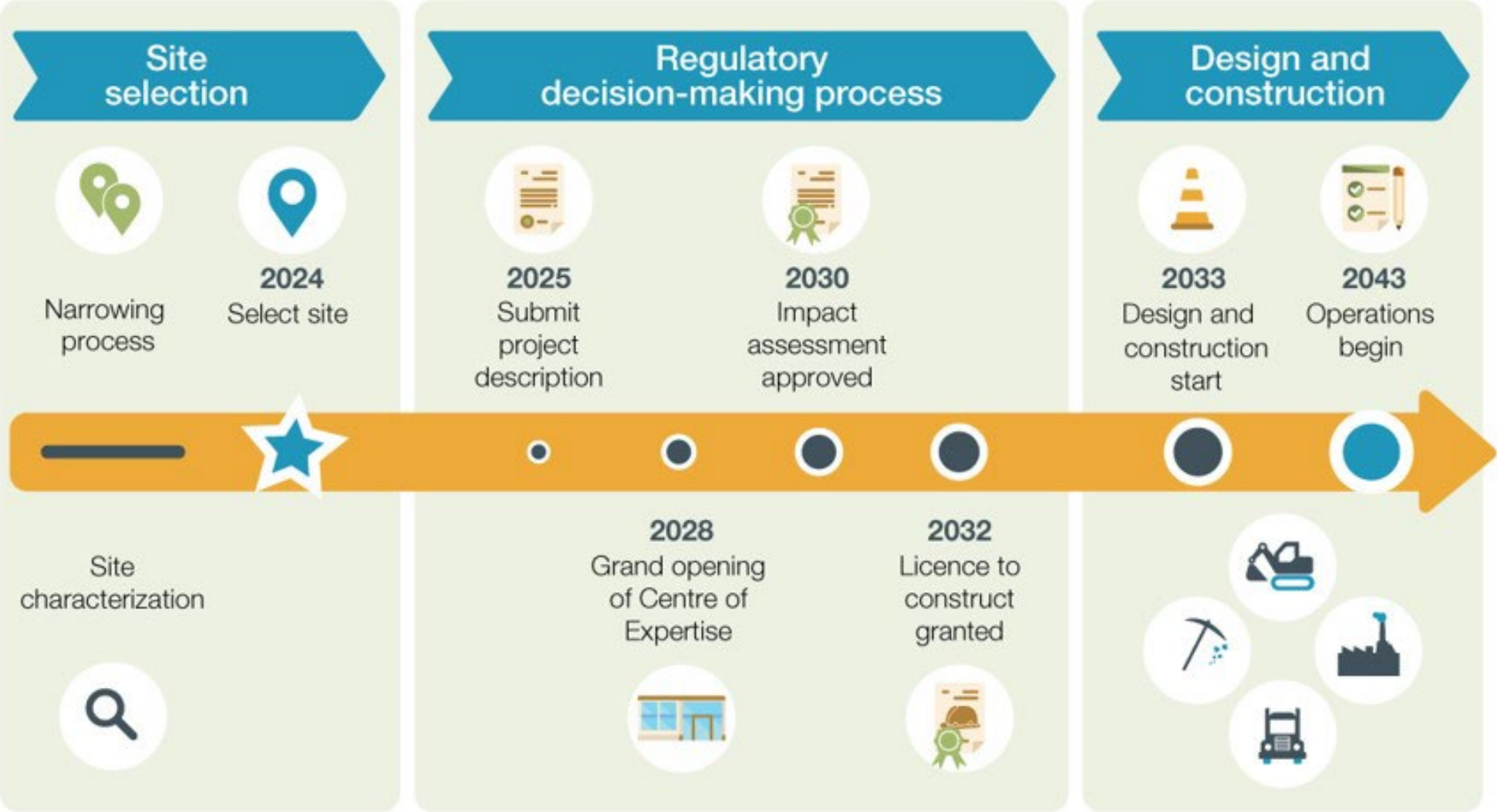
Partnership

3

2
Transportation



Project Timelines





» Willingness and Reconciliation

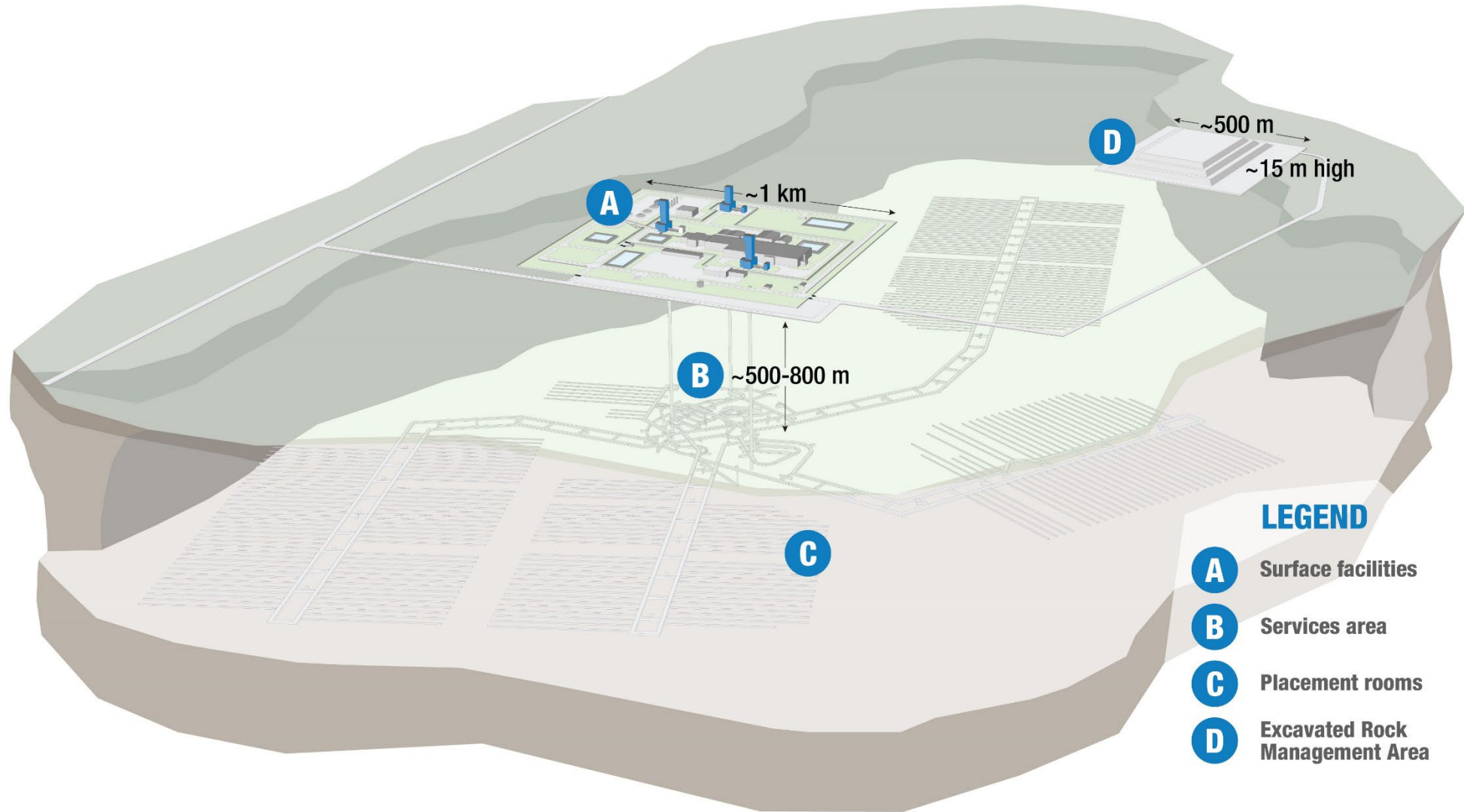


**Wabigoon Lake
Ojibway Nation –
Ignace area**



**Saugeen Ojibway
Nation –
South Bruce area**

The NWMO's Deep Geological Repository

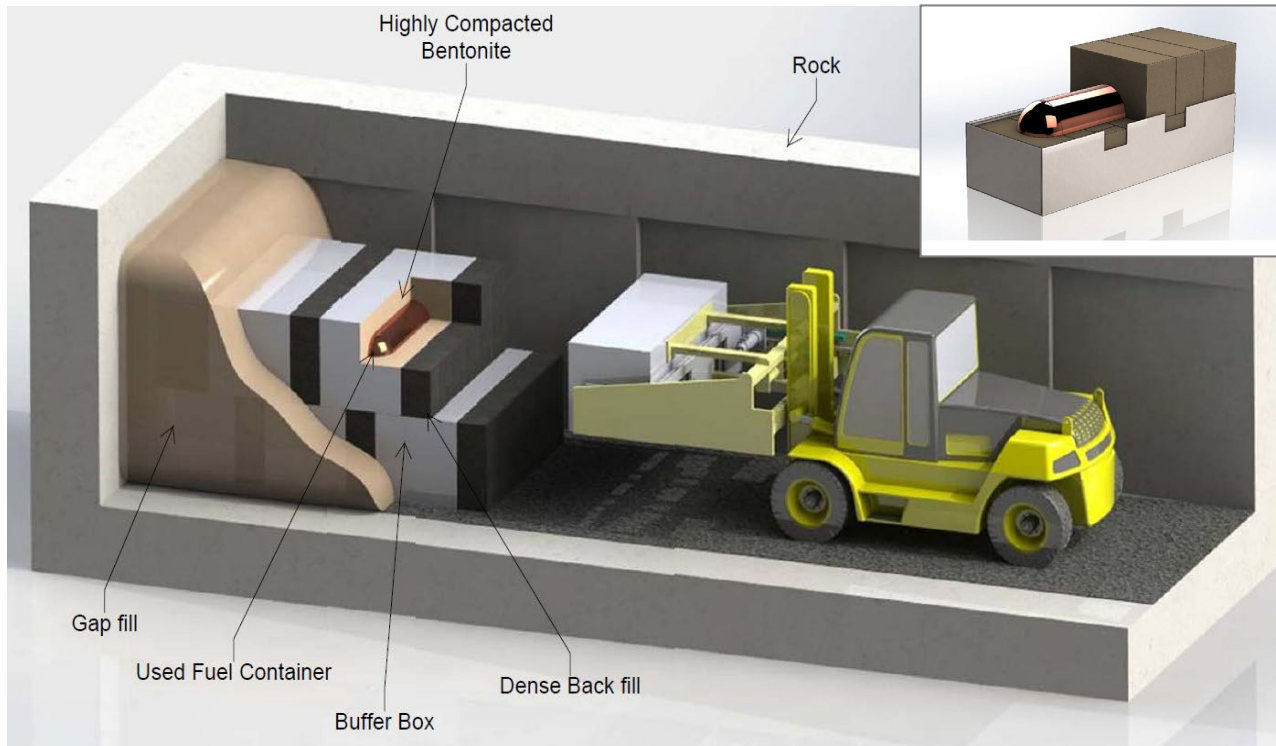


Site Investigation Ignace



Site Investigation South Bruce

Proof Testing & Technology Demonstration



Used nuclear fuel transportation



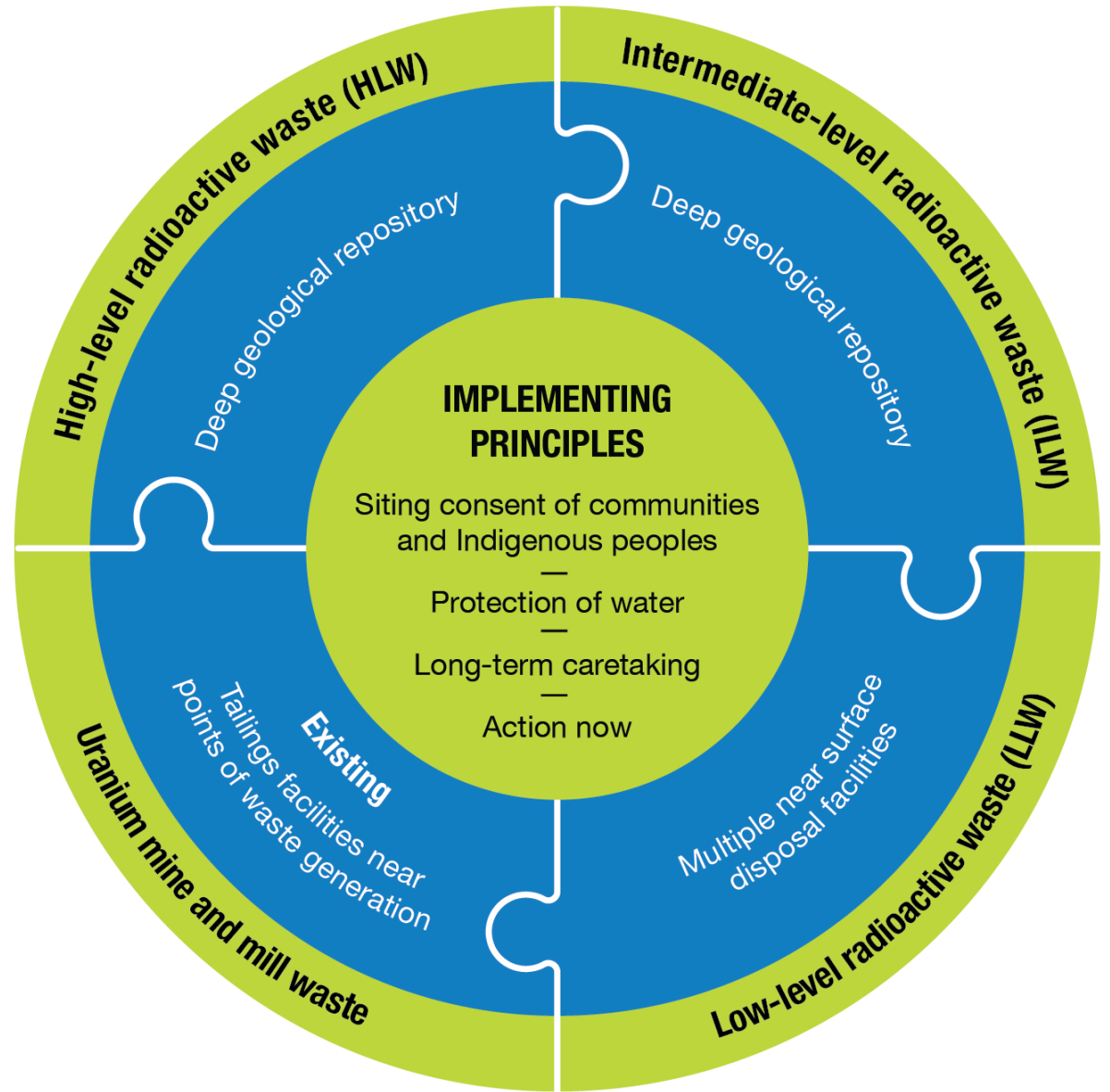
SMR Fuel Wastes

- NWMO is in discussion with several SMR vendors and utilities
- NWMO will apply the same standard of safety to managing nuclear fuel wastes from advanced reactors, including SMRs:
 - Physical requirements (solid waste form)
 - Characterization requirements (physical, chemical, radionuclides, etc.)
 - Repository requirements (packaging, impact on DGR layout)
 - Transportation requirements (transportable to the DGR site)



A conceptual rendering of the BWRX-300 SMR plant by GE Hitachi Nuclear Energy.

Integrated Strategy for Radioactive Waste



Hearing from the public on priorities, questions and concerns

- Since 2015 we have heard from thousands of individuals and groups on the subject
 - Over 300 meetings
- Development and release of Draft Transportation Planning Framework August 2020
 - Over 50 meetings and hundreds of questions



Thank you

   @nwmocanada

 /company/nwmocanada

 www.nwmo.ca

